



Modeling MoMA's traveling exhibition history in Wikidata + LD4 Arts/Design Affinity Group Meeting

- What is Wikidata?
- Brief history of MoMA traveling exhibitions
- Concept modeling - Rauschenberg retrospective
- LD4 Arts + Design Community
- Potential directions for the future

Samie Konet

Pratt-MoMA Linked Open Data Fellow (2023-2024)

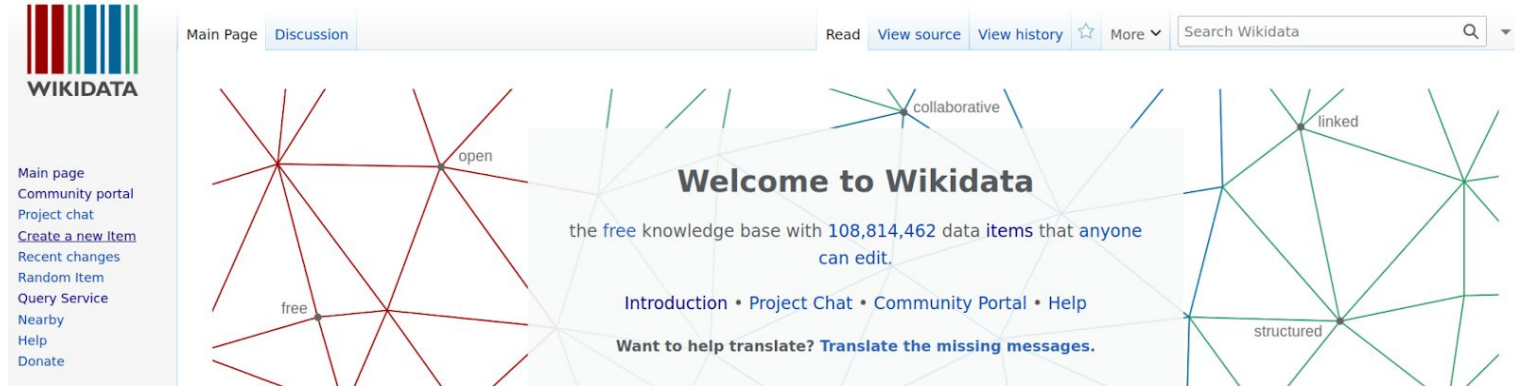
MoMA



Pratt

What is Wikidata?

- Wikidata is a knowledge graph, edited collaboratively by humans and machines. A knowledge graph *represents a network of real-world entities—such as objects, events, situations or concepts—and illustrates the relationship between them.* (IBM)
- It is a centralized, linked data repository for all Wikimedia projects.
- Wikidata describes *items* which represent all things in human knowledge. An item is composed of statements. A statement is formatted through Subject-Predicate-Object relationship, and is composed of property-value pairs in Wikidata.



A brief history of MoMA's Traveling Exhibitions



Elodie Courter, Director, Department of Circulating Exhibitions, MoMA, New York, c. 1945

1933

Domestic Circulating Exhibitions (CE)



Installation view of "Three Centuries of American Art" at the Musée du Jeu de Paume. May 24, 1938–July 31, 1938. Photographic Archive. The Museum of Modern Art Archives, New York. IN76a.15A

1952

International Program (ICE)

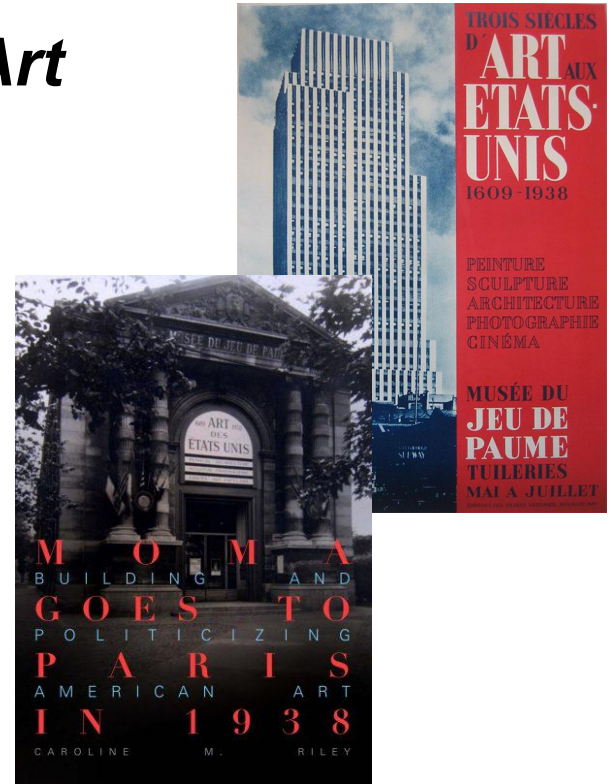


Installation view of Installation view of the exhibition "The Machine as Seen at the End of the Mechanical Age" at MoMA. November 27, 1968–February 9, 1969. Photographic Archive. The Museum of Modern Art Archives, New York. IN877.7. Photograph by James Mathews.

Present day -

Three Centuries of American Art


- In 1938, MoMA's first international traveling exhibition, *Three Centuries of American Art*, traveled to the Musée du Jeu de Paume in Paris.
- Over 750 artworks created between 1609-1938 were selected to present the most comprehensive display of American art in Europe at the time.
- Post World War I - attempt to solidify and democratize art as an image of solidarity (framework of "exhibitionary life cycle")
- The programs developed for *Three Centuries of American Art* morphed into MoMA's postwar International Program, sent American art to Europe in the 1950s, further solidifying the canon of American art as we know it today.



(Above) Atelier Mourlot, *Daily News Building*, in *Trois Siècles d'Art aux Etats-Unis*, 1938. Lithographic poster.

(Below) *MoMA Goes to Paris: Building and Politicizing American Art* by Caroline M. Riley

Review of existing Traveling Exhibitions entries in Wikidata



WIKIDATA

- Main page
- Community portal
- Project chat
- Create a new Item
- Recent changes
- Random Item
- Query Service
- Nearby
- Help
- Donate

Lexicographical data

- Create a new Lexeme
- Recent changes
- Random Lexeme

Tools

- Special pages
- Printable version
- Get shortened URL

Special page

Search results

To search for Wikidata items by their title on a given site, use [Special:ItemByTitle](#).

Q the museum as seen at the end of the mechanical age

Advanced search:

Search in:

The Machine as Seen at the End of the Mechanical Age (Q79266234)

1969 Exhibition at SFMOMA (then the San Francisco Museum of Art)

7 statements, 0 sitelinks - 04:13, 31 May 2022

The Machine as Seen at the End of the Mechanical Age (Q110891499)

1968 exhibition at Museum of Modern Art

21 statements, 0 sitelinks - 16:22, 11 April 2023

Mary Cassatt: Modern Woman (Q30150382)

American art exhibition

Recoil: Most relevant properties which are absent

In more languages

Configure

Language	Label	Description	Also known as
English	Mary Cassatt: Modern Woman	American art exhibition	
American English	No label defined	No description defined	
Spanish	No label defined	No description defined	
Traditional Chinese	No label defined	No description defined	

Statements

Instance of temporary art exhibition

0 references

travelling exhibition

0 references

named after Mary Cassatt

0 references

edit

+ add reference

+ add value

country United States of America

0 references

edit

+ add reference

+ add value

location Art Institute of Chicago

start time 10 October 1998

end time 10 January 1999

0 references

edit

+ add reference

Museum of Fine Arts Boston

start time 14 February 1999

end time 9 May 1999

0 references

edit

+ add reference

National Gallery of Art

start time 6 June 1999

end time 6 September 1999

edit

Current entries found on Wikidata are often not related to one another, may not be queried as collective or individual instances, or do not recognize the concept of “traveling exhibition” within entry description.

Case Study: Robert Rauschenberg retrospective (2016-2018)



Robert Rauschenberg *Retroactive II* 1964, Museum of Contemporary Art (Chicago)

Robert Rauschenberg
Tate Modern
December 1, 2016-April 2, 2017



Installation view of the exhibition "Robert Rauschenberg: Among Friends". Photograph by Robert Gerhardt

Robert Rauschenberg: Among Friends
MoMA
May 21, 2017-September 17, 2017



Robert Rauschenberg, *Collection*, 1954/1955, collection of SFMoMA. © Robert Rauschenberg Foundation

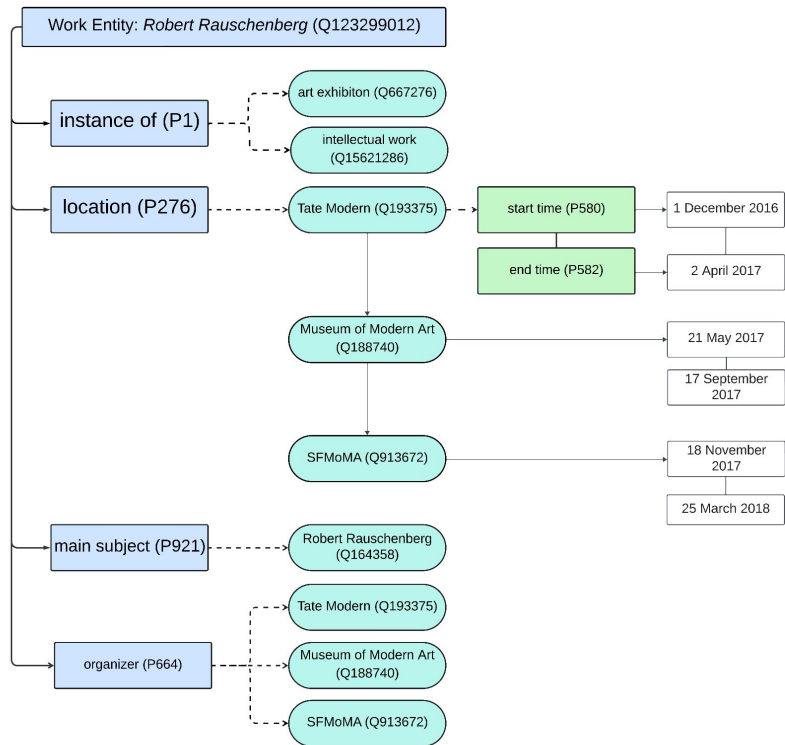
Robert Rauschenberg: Erasing the Rules
SFMoMA
November 18, 2017-March 25, 2018

Current modeling using existing Wikidata properties: *Parent Record*

Robert Rauschenberg (Q123299012)

Presentation of the first 21st-century retrospective organized between the Museum of Modern Art and Tate Modern in association with the San Francisco Museum of Modern Art from 2016-2018

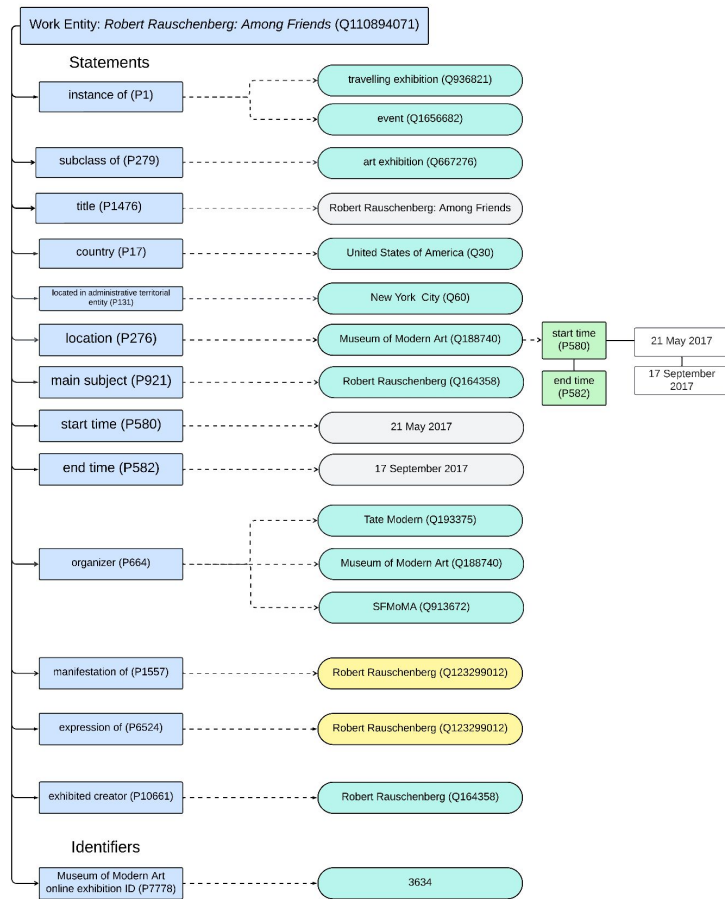
Robert Rauschenberg | Robert Rauschenberg: Among Friends | Robert Rauschenberg: Erasing the Rules



Current modeling using existing Wikidata properties: *Child Record*

Robert Rauschenberg: Among Friends (Q110894071)

2017 instantiation of Robert Rauschenberg retrospective at MoMA, installed as "Robert Rauschenberg: Among Friends"



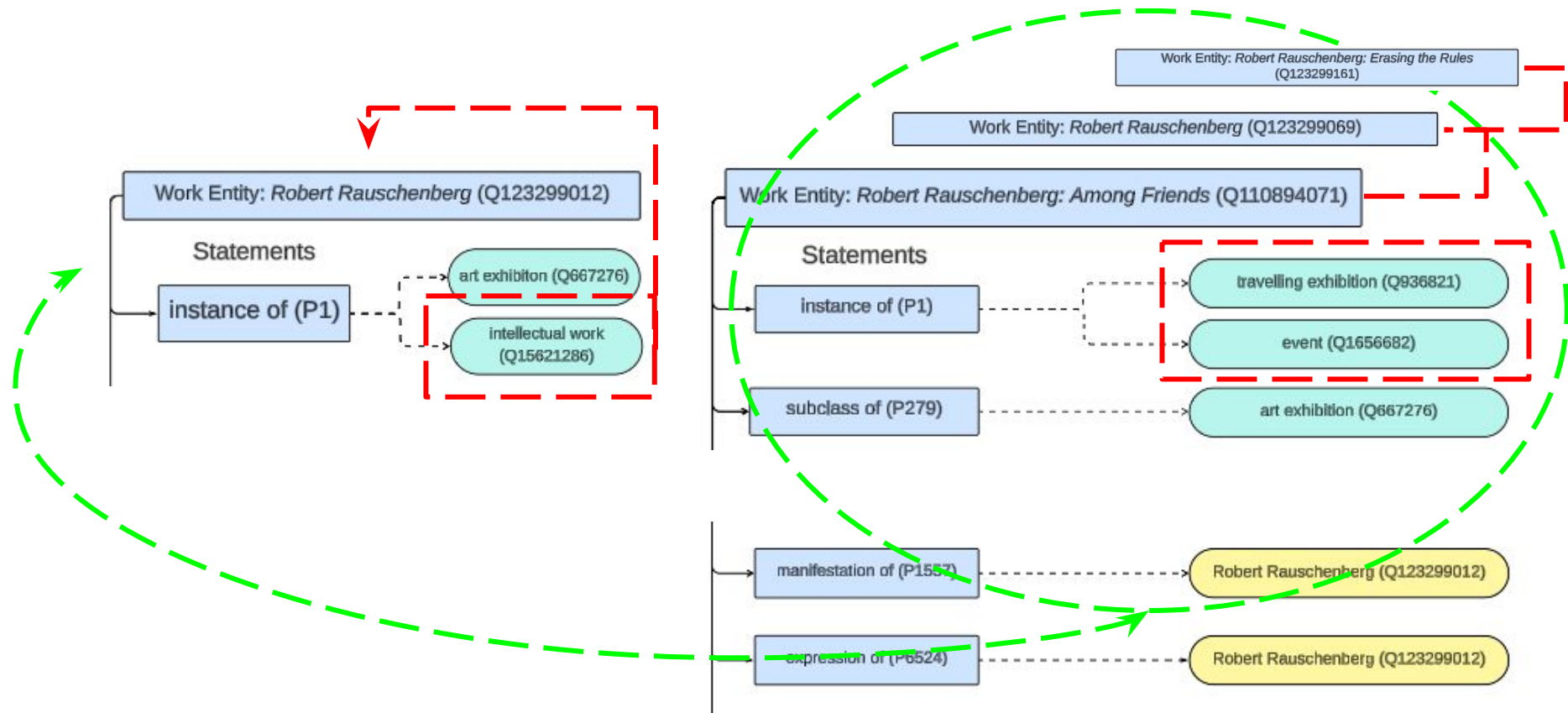


WEMI??

Parent

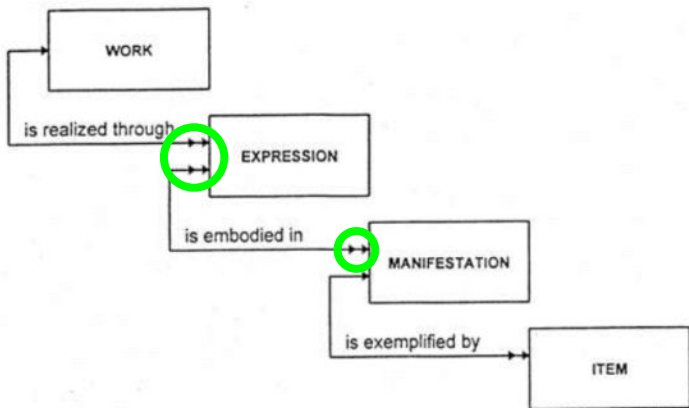


Children



Using current properties: the outcome

Ragnar Kjartansson: The Visitors	2022-24 exhibition at SFMOMA	2022-11-05	2024-01-02
Of Whales	art exhibition at SFMOMA (2022-)		
Robert Rauschenberg	Presentation of the first 21st-century retrospective organized between the Museum of Modern Art and Tate Modern in association with the San Francisco Museum of Modern Art from 2016-2018		



- We do not want the Parent Record to be perceived as an exhibition record!
- Following WEMI in Wikidata is complicated

Derived statements

has manifestation	Robert Rauschenberg: Among Friends
has expression	Robert Rauschenberg: Erasing the Rules
	Robert Rauschenberg: Among Friends
	Robert Rauschenberg

LD4: Arts + Design Affinity Group Meetings

- Participants of the LD4 A+D meetings includes a spectrum of LOD practitioners from major museums, libraries + archives

Discussion points:

- How to use existing Wikidata properties to create a model that is easy to replicate
 - Addressing issues of Structure vs. Label
 - Single vs. Multiple item approach (parent-child)
 - Future discussions and plans for modeling

Interested in getting involved with LD4 A+D?

Please check out the LD4 Community Group website for more information!



LD4: Community Suggestions + Consensus

Structure vs. Label

- <part of> and <has parts>
 - Has precedence in Wikidata when describing events that follow each other or with items that share a relationship when describing a whole concept or idea

Single vs. Multi-item approach

- Value of querying collective and individual locations

The future

- LD4 will continue to host meetings
- WikiProject created for community to populate and standardize methods for describing

part of (P361)

object of which the subject is a part (if this subject is already part of object A which is a part of object B, then please only make the subject part of object A), inverse property of "has part" (P527, see also "has parts of the class" (P2670))

meronym of | section of | system of | subsystem of | subassembly of | contained within | assembly of | part of-property | merged with | component of | in | within | is part of | subgroup of | collateral branch of | cadet branch of | branch of | element of | chain | contained in

▼ In more languages

Configure

Language	Label	Description	Also known as
English	part of	object of which the subject is a part (if this subject is already part of object A which is a part of object B, then please only make the subject part of object A), inverse property of "has part" (P527, see also "has parts of the class" (P2670))	meronym of section of system of subsystem of subassembly of contained within assembly of part of-property merged with component of in within is part of subgroup of collateral branch of cadet branch of branch of element of chain contained in

Project page [Discussion](#) [Read](#) [Edit](#) [View history](#) [More](#)

Wikidata:WikiProject Visual arts/Item structure/Art exhibitions/Traveling exhibitions

< [Wikidata:WikiProject Visual arts](#) | [Item structure](#) | [Art exhibitions](#)

⚠ This page is under construction! ⚠

See Wikidata:WikiProject Visual arts/Item structure/Art exhibitions for documentation of the data model for art exhibitions

Creating this page to document approaches to modeling [traveling exhibitions](#) evolving out of conversations of the [LD4 Art & Design Affinity Group \(Q124691258\)](#)

Add WikiProject Traveling Art Exhibitions (Q124691220) to items being worked on in the context of this WikiProject

Queries [\[edit\]](#)

- [Items on the focus list of WikiProject Traveling Art Exhibitions \(Q124691220\), ordered by item creation date](#)

This page was last edited on 20 February 2024 at 21:43

Why are traveling exhibitions important to represent as data?

- Illuminates the impact of traveling exhibitions within a framework of its life cycle -
 - Exhibitions as constructions of media, ideas, politics, etc. are experienced as both ephemeral (their finite physical display) and through long-lasting (their continued impact on our understanding of individual artworks, art-historical canons and valorization of artists after the exhibition has closed) (Riley, 2023)
- Provides visibility to the number and quality of connections created by traveling exhibitions between institutions and artists
- Informs the way exhibition-making aids in constructing authoritative narratives in art-historical discourse
- As quantifiable data, it will provide more clarity around the gaps in representation and support of exhibitions for underrepresented artists and communities in collection, presentation, etc. (will fix wording)
- Building blocks for the bridging bibliographic representation and context of event that describes the complete experience of an exhibition through differing forms of documentation

Thank you!

Questions??

Contact:
skonet@pratt.edu



Bayley, L. (2019). *Curating and Collecting*. Tate.

<https://www.tate.org.uk/research/reshaping-the-collectible/research-approach-curating-collecting-museology>

Bjerregaard, P. (Ed.). (2020). *Exhibitions as research : experimental methods in museums* (Online Resource 069.5 E96e). Routledge.

<https://eds.s.ebscohost.com/eds/detail/detail?vid=3&sid=3b96ebad-992f-42e4-a829-596b7fa42620%40redis&bdata=JmF1dGh0eXBIPXNzbyZj dXN0aWQ9czg0NDA3Nzlmc2l0ZT1lZHMtMGI2ZSZZy29wZT1zaXRI#AN=pri.b1251182&db=catalog06956a>

Braden, L. E. A. (2021). Networks Created Within Exhibition: The Curators' Effect on Historical Recognition. *American Behavioral Scientist*, 65(1), 25–43. <https://doi.org/10.1177/0002764218800145>

Collicelli Cagol, S. (2015, July 20). *Exhibition History and the Institution as a Medium* [Online Journal]. Stedelijk Studies.

<https://stedelijkstudies.com/journal/exhibition-history-and-the-institution-as-a-medium/>

Gamble, A. (2023). MoMA Goes to Paris in 1938: Building and Politicizing American Art. *Panorama*.

<https://journalpanorama.org/article/moma-goes-to-paris/>

Group, I. F. R. for B. R. (FRBR) R., Riva, P., Le Boeuf, P., & Zumer, M. (2018). *IFLA Library Reference Model: A Conceptual Model for Bibliographic Information*. <https://repository.ifa.org/handle/123456789/40>

IFLA Library Reference Model (LRM). (2020, May 1). <https://www.librarianshipstudies.com/2020/04/ifa-library-reference-model-lrm.html>

Kaniari, A. (2014). Curatorial Style and Art Historical Thinking: Exhibitions as Objects of Knowledge. *Procedia - Social and Behavioral Sciences*, 147, 446–452. <https://doi.org/10.1016/j.sbspro.2014.07.136>

Lind, M. (2009, October 1). "THE CURATORIAL." *Artforum*. <https://www.artforum.com/columns-the-curatorial-192127/>

Martini, V. (2020, June). *The Evolution of an Exhibition Model. Venice Biennale as an Entity in Time - ONCURATING*. On Curating.

<https://on-curating.org/issue-46-reader/the-evolution-of-an-exhibition-model-venice-biennale-as-an-entity-in-time.html>

Monk, E. (2021, March 15). Using Wikidata as a tool for inter-institutional collaboration and accessible collection data: SFMOMA. *Wiki Education*.

<https://wikiedu.org/blog/2021/03/15/using-wikidata-as-a-tool-for-inter-institutional-collaboration-and-accessible-collection-data-sfmoma/>

Myers, J. (2011). On the Value of a History of Exhibitions. *The Exhibitionist*, 4.

Nakasone, S. (2023). *Adapting Aspects of FRBR for Artworks in Wikidata*. <https://repository.ifa.org/handle/123456789/2669>

Riley. (2023a, February 13). Q&A with Caroline Riley, author of MoMA Goes to Paris in 1938 [Blog]. *UC Press Blog*.

<https://www.ucpress.edu/blog/61590/qa-with-caroline-riley-author-of-moma-goes-to-paris-in-1938/>

Riley, C. M. (2023b). *MoMA Goes to Paris in 1938: Building and Politicizing American Art*. University of California Press.

Vogel, F. (2014, January). *Notes on exhibition history in curatorial discourse - ONCURATING*. On Curating.

<https://on-curating.org/issue-21-reader/notes-on-exhibition-history-in-curatorial-discourse.html>

Zumer, M. (2019). *IFLA Library Reference Model (LRM)* [Text]. <https://www.isko.org/cyclo/lrm>

Image Credits: Peter Moore. Photograph of Robert Rauschenberg's *Pelican* (1963) as performed in a former CBS television studio, New York, during the First New York Theater Rally, May 1965. © Barbara Moore/Licensed by VAGA, New York, NY, courtesy Paula Cooper Gallery, New York.