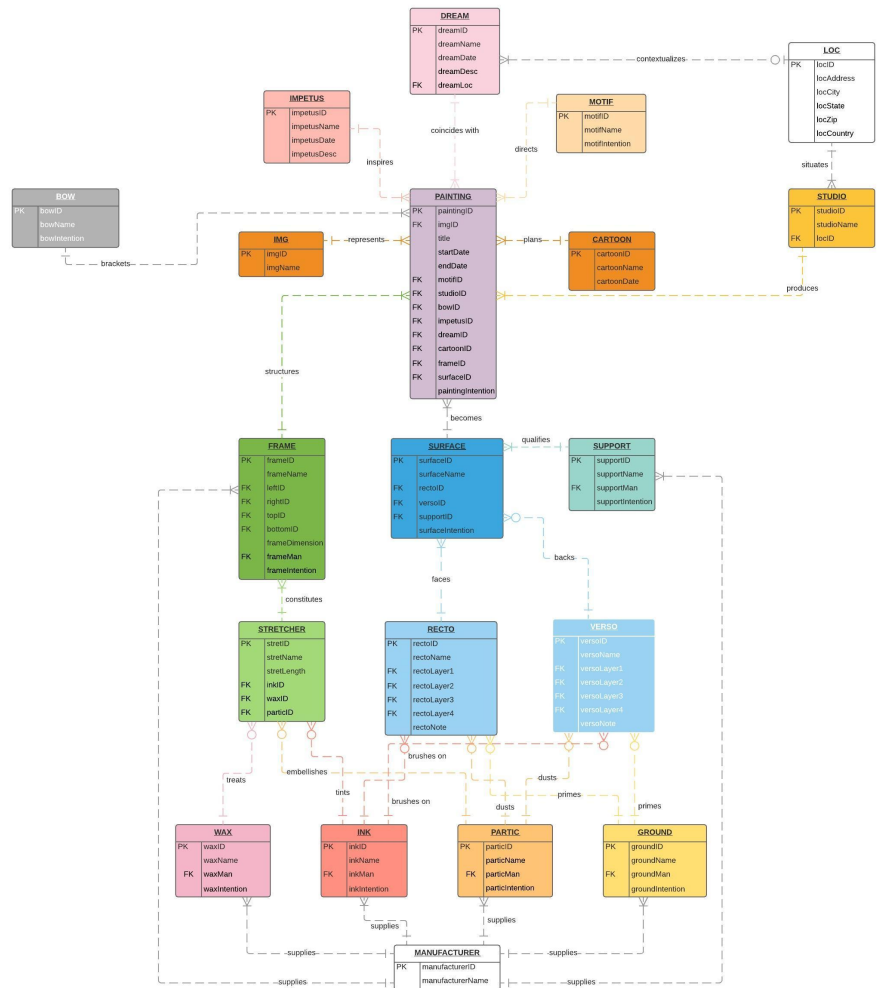
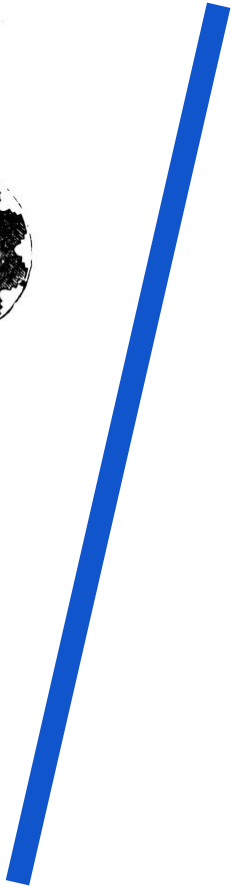
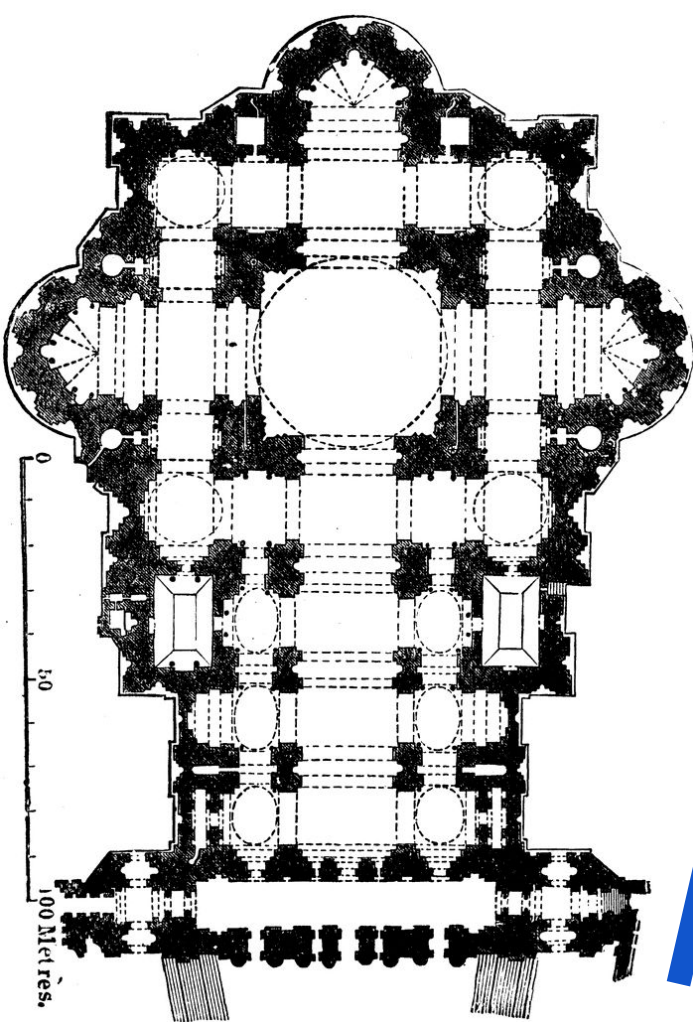




RG STUDIO

DATABASE IMPLEMENTATION
LIS639 DATABASE DESIGN & DEVELOPMENT
RICHARD GOLDSTEIN 2017



Floorplan of St. Peter's Basilica via https://etc.usf.edu/clipart/73700/73703/73703_st_peters.htm



chair (châr), *n.* [OF. *chaire* (F. *chaire*), < L. *cathedra*: see *cathedra*.] A seat with a back, and often arms, usually for one person; a seat of office or authority, or the office itself; the person occupying the seat or office, esp. the chairman of a meeting; a sedan-chair; a chaise; a metal block or clutch to support and secure a rail in a railroad.

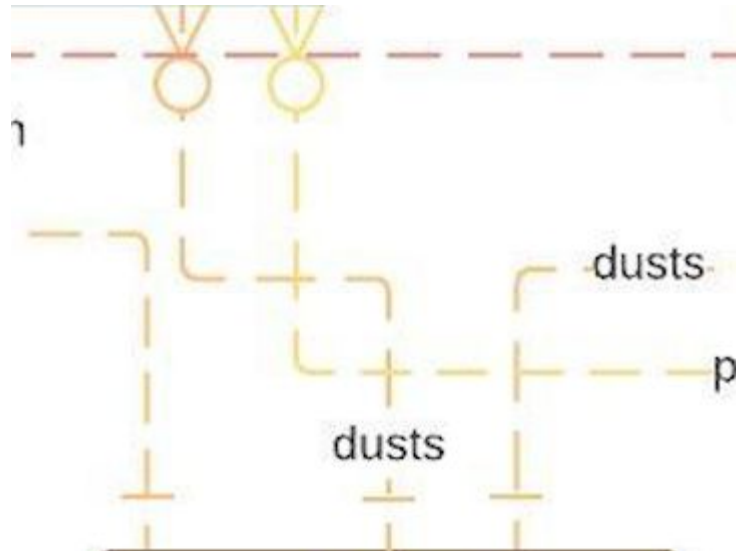
Joseph Kosuth
One and Three Chairs
1965

<https://www.moma.org/collection/works/81435>



Daniel Dezeuze
Flexible Wooden Ladder
1974

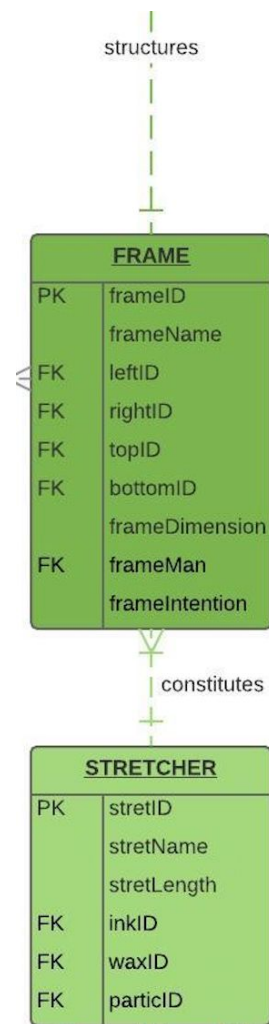
<http://www.artinamericamagazine.com/news-features/magazine/theory-and-matter/>



<u>PARTIC</u>	
PK	particID
	particName
FK	particMan
	particIntention



```
CREATE TABLE partic (  
  partic_ID int NOT NULL AUTO_INCREMENT,  
  partic_Name varchar (25),  
  partic_Man int,  
  partic_Intention varchar (2000),  
  PRIMARY KEY (partic_ID),  
  FOREIGN KEY (partic_Man) REFERENCES manufacturer(man_ID)  
);
```

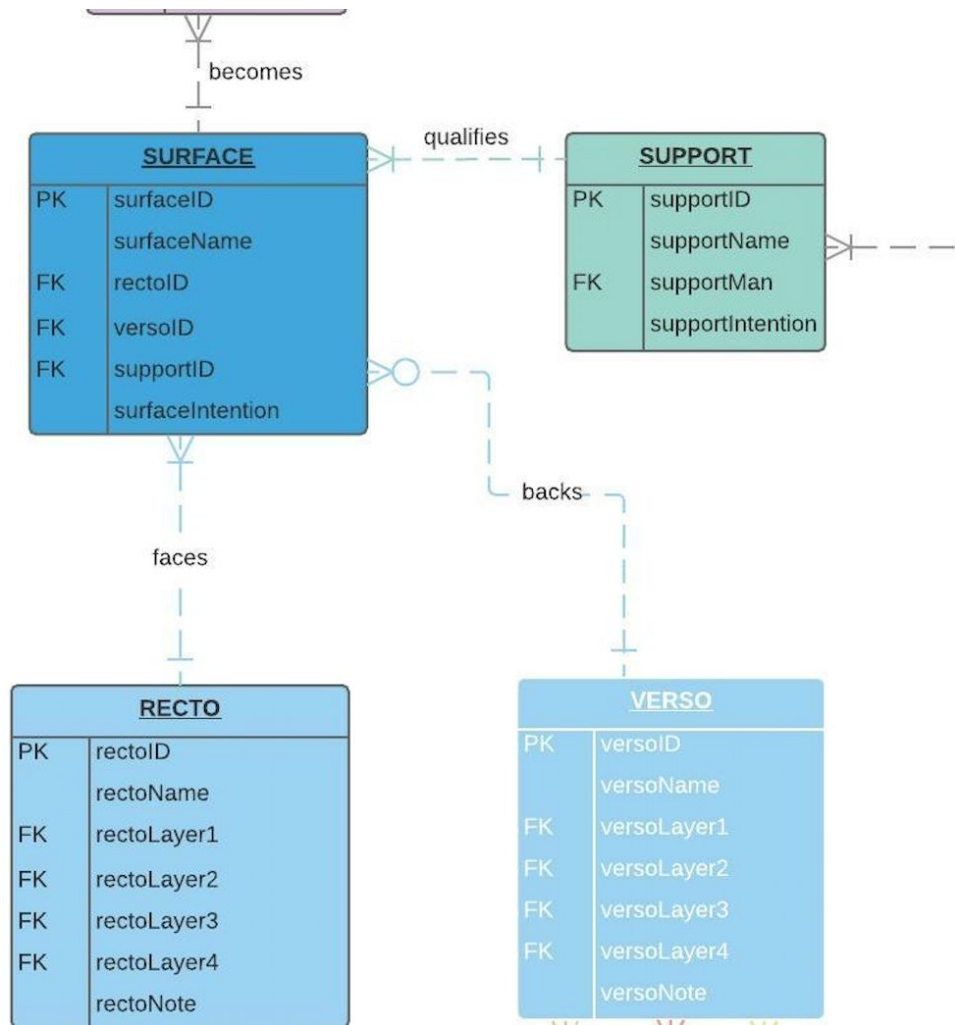




```
CREATE TABLE stretcher (  
  stretcher_ID int NOT NULL AUTO_INCREMENT,  
  stretcher_Name varchar (25),  
  stretcher_length decimal (5,2),  
  ink_ID int,  
  wax_ID int,  
  partic_ID int,  
  PRIMARY KEY (stretcher_ID),  
  FOREIGN KEY (ink_ID) REFERENCES ink(ink_ID),  
  FOREIGN KEY (wax_ID) REFERENCES wax(wax_ID),  
  FOREIGN KEY (partic_ID) REFERENCES partic(partic_ID)  
);
```



```
CREATE TABLE frame (  
  frame_ID int NOT NULL AUTO_INCREMENT,  
  frame_Name varchar (25),  
  left_ID int,  
  right_ID int,  
  top_ID int,  
  bottom_ID int,  
  man_ID int (35),  
  frame_Intention varchar (2000),  
  PRIMARY KEY (frame_ID),  
  FOREIGN KEY (left_ID) REFERENCES stretcher(stretcher_ID),  
  FOREIGN KEY (right_ID) REFERENCES stretcher(stretcher_ID),  
  FOREIGN KEY (top_ID) REFERENCES stretcher(stretcher_ID),  
  FOREIGN KEY (bottom_ID) REFERENCES stretcher(stretcher_ID),  
  FOREIGN KEY (man_ID) REFERENCES manufacturer(man_ID)  
);
```

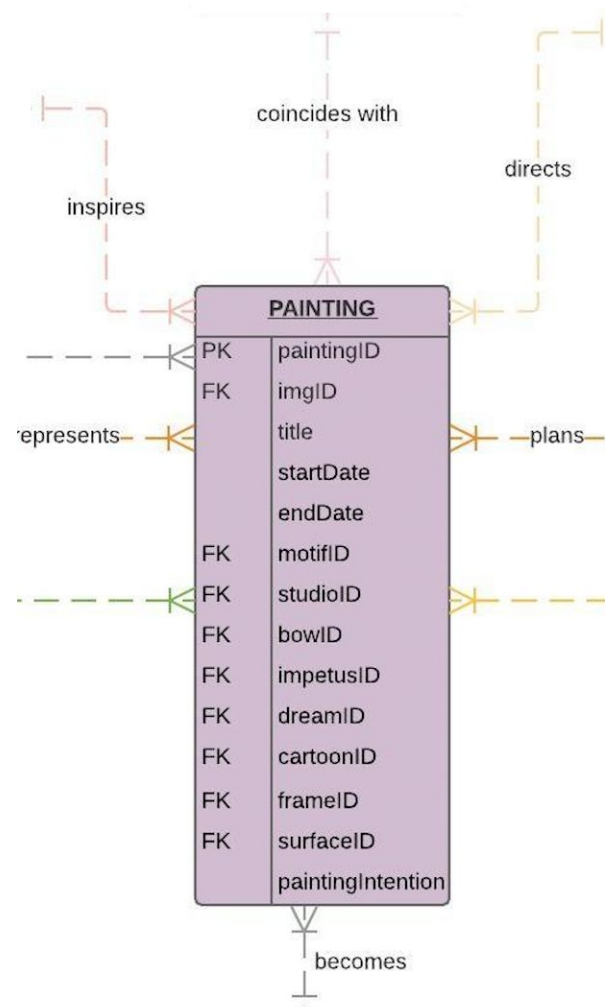





```
CREATE TABLE verso (  
  verso_ID int NOT NULL AUTO_INCREMENT,  
  verso_Name varchar (25),  
  verso_Note varchar (2000),  
  PRIMARY KEY (verso_ID)  
);
```



```
CREATE TABLE versoLayer (  
  verso_ID int,  
  versoLayer_number int NOT NULL,  
  ink_ID int,  
  ground_ID int,  
  partic_ID int,  
  PRIMARY KEY (verso_ID, versoLayer_Number),  
  FOREIGN KEY (verso_ID) REFERENCES verso(verso_ID),  
  FOREIGN KEY (ink_ID) REFERENCES ink(ink_ID),  
  FOREIGN KEY (ground_ID) REFERENCES ground(ground_ID),  
  FOREIGN KEY (partic_ID) REFERENCES partic(partic_ID)  
);
```





```
CREATE TABLE painting (  
  painting_ID int NOT NULL AUTO_INCREMENT,  
  img_ID int,  
  title varchar (35),  
  start_Date DATE,  
  end_Date DATE,  
  motif_ID int,  
  studio_ID int,  
  bodyOfWork_ID int,  
  impetus_ID int,  
  dream_ID int,  
  cartoon_ID int,  
  frame_ID int,  
  surface_ID int,  
  painting_Intention varchar (2000),  
  PRIMARY KEY (painting_ID),  
  FOREIGN KEY (img_ID) REFERENCES image(img_ID),  
  FOREIGN KEY (motif_ID) REFERENCES motif(motif_ID),  
  FOREIGN KEY (studio_ID) REFERENCES studio(studio_ID),  
  FOREIGN KEY (bodyOfWork_ID) REFERENCES bodyOfWork(bodyOfWork_ID),  
  FOREIGN KEY (impetus_ID) REFERENCES impetus(impetus_ID),  
  FOREIGN KEY (dream_ID) REFERENCES dream(dream_ID),  
  FOREIGN KEY (cartoon_ID) REFERENCES cartoon(cartoon_ID),  
  FOREIGN KEY (frame_ID) REFERENCES frame(frame_ID),  
  FOREIGN KEY (surface_ID) REFERENCES surface(surface_ID)  
  );
```

"Cylinders", "This motif came from the desire to give volume to a presence without depicting the form. Gestalt. Two equal and parallel circular segments could presence a cylindrical volume—classically as column capital and base or Pop as the ghost of a soup can."

```
CREATE TRIGGER magicSurface AFTER INSERT ON verso
FOR EACH ROW
INSERT INTO surface(surface_ID, verso_ID) VALUES (new.verso_ID);
```

```
SELECT partic_Intention FROM partic WHERE partic_ID IN (SELECT partic_ID FROM painting WHERE partic_Name = "Muscovite mica" OR partic_Name = "Verona green earth");
```

```
/*v. A view that satisfies one of your users needs.*/
```

```
/*This view would display paintings with its corresponding dream.*/
```

```
CREATE VIEW dreamFilter AS SELECT painting_ID, title, dream_ID FROM painting;
```